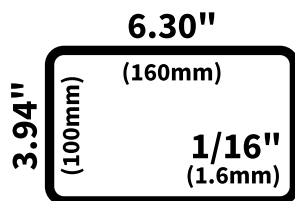
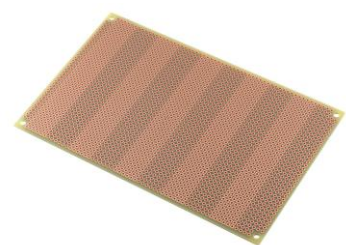
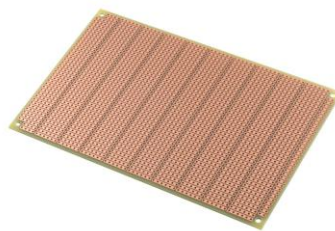
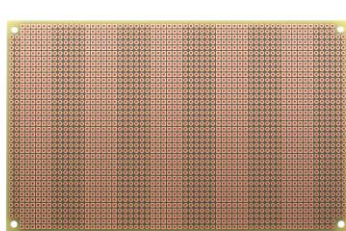


PR6H3-D™

PR6H 6-hole boards have pre-cut strips. Great for integrated circuit projects & general purpose use. Double sided.

PR6H3-D Features:

- Convenient 6-hole ProtoBoard pattern provides an easy way to connect parts to IC's.
- Good for analog op-amp circuits and digital logic layouts.
- Double-sided PCB with plated holes allows parts to be soldered on both sides.
- Square and round pads align on the top and bottom to help position parts.
- High-quality FR4 glass-epoxy circuit board.
- 1oz/ft² copper with an anti-tarnish coating for easy soldering. Lead free and RoHS compatible.
- 38 x 62 holes, 0.037" holes are drilled on 0.1" (2.54mm) centers. Four 0.125" mounting holes.
- Size3 = 160 x 100mm (6.30 x 3.94in), 1/16" thick (1.6mm)



PR6H3-D Description:

The PR6H3-D is a Size3 prototyping board with double sided (D) copper and plated holes. The convenient 6-hole ProtoBoard pattern provides an easy way to connect parts to analog and digital IC pins. Either 3 or 4 holes are available at each IC pin for adding resistors, caps, and wires for a standard 0.3" wide DIP IC. It works well for analog op-amp layouts and digital logic circuits. It can be used with single in-line (SIL) sockets to allow development modules to be plugged in. Plated holes provide a stronger solder joint than with single-sided boards as the solder flows into the hole.

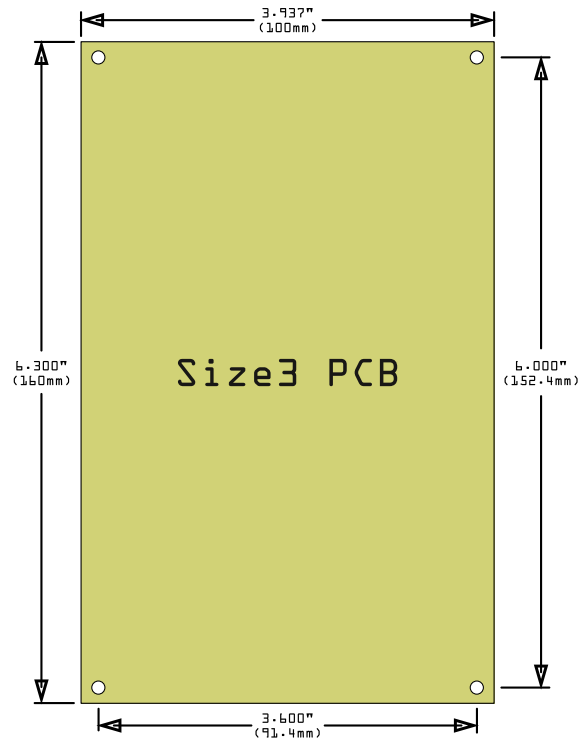
This double-sided board has 6-hole pads on the bottom side and individual pads on the top side allowing you to solder parts on either side as needed. Tracks only need to be cut on the bottom if shorter tracks or isolated pads are required. Positioning pads are provided to help in locating holes, with the bottom having square and round pads that correspond to the pads on the top side.

PR6H3-D uses a high-quality FR4 glass-epoxy base that has higher stability and lifespan than vintage stripboard materials. An anti-tarnish coating protects the copper for a long shelf-life and provides easy soldering. The four 0.125" mounting holes are unplated to avoid shorting adjacent tracks in case they need to be used. They are sized for 4-40 size screws and are positioned on the 0.1" design grid.

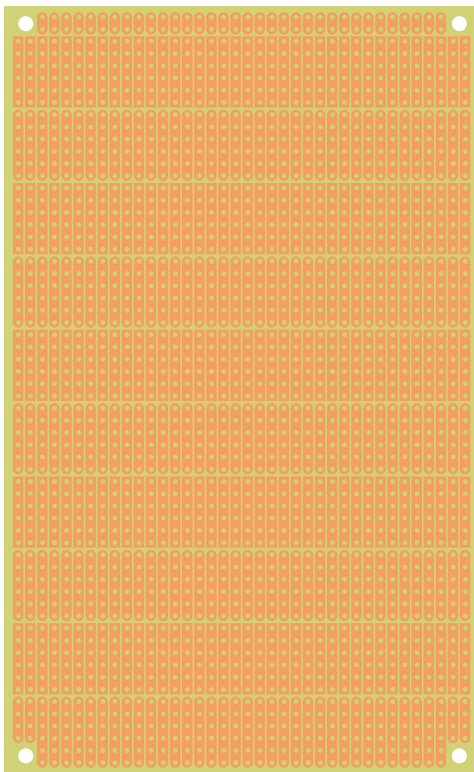
PR6H3-D Specifications:

- Part #: PR6H3-D
- Series: ProtoBoard 6H
- Plating: Plated Through Holes
- Pad Style: 6-Hole Pads
- No. of Pads: 217 Pads
- No. of Holes: 2,332 (62 cols x 38 rows)
- Pitch: 0.100" / 2.54mm
- Hole Diameter: 0.037" / 0.94mm
- Sidedness: Double-sided
- Substrate: FR4 Epoxy Glass
- Anti-tarnish Coating: Yes
- Metal: Copper (1oz/ft²)
- Silkscreen: None
- Length: 6.30" / 160mm
- Width: 3.94" / 100mm
- Thickness: 0.063" / 1.60mm
- Mounting Holes: 4 x 0.125" / 3.18mm
- RoHS: Yes

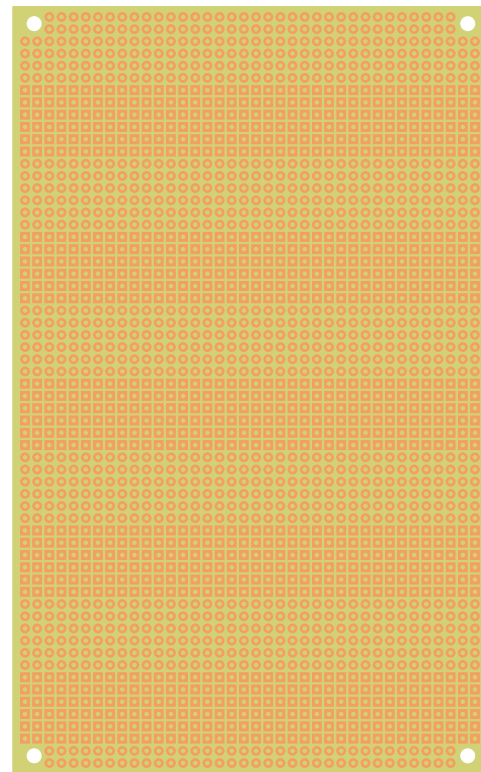
PR6H3-D Measurements:



PR6H3-D Drawings:



PR6H3-D Bottom Side



PR6H3-D Top Side