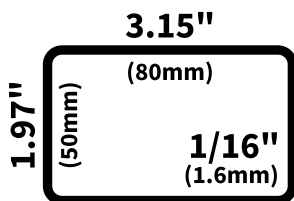
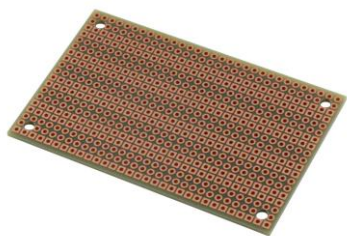
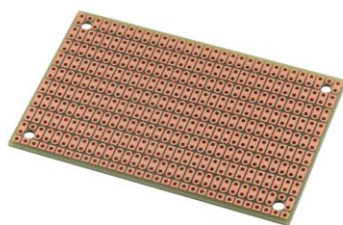
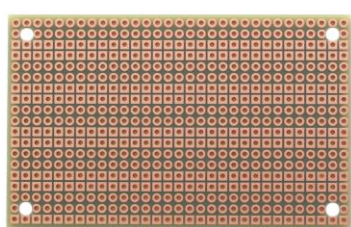


PR2H1-DR™

PR2H1 rotated allows connectors on the long edge with compact layouts. Double sided with positioning pad shapes.

PR2H1-DR Features:

- Convenient 2-hole ProtoBoard pattern provides an easy way to connect parts.
- Good for compact analog and digital layouts.
- Double-sided PCB with plated holes allows parts to be soldered on both sides.
- Rotated pattern allows edge parts to be located on the long edge.
- Square and round pads align on the top and bottom to help position parts.
- High-quality FR4 glass-epoxy circuit board.
- 1oz/ft² copper with an anti-tarnish coating for easy soldering. Lead free and RoHS compatible.
- 31 x 19 holes, 0.037" holes are drilled on 0.1" (2.54mm) centers. Four 0.125" mounting holes.
- Size1 = 50 x 80mm (1.97 x 3.15in), 1/16" thick (1.6mm)



PR2H1-DR Description:

The PR2H1-DR is a Size1 prototyping board with double sided (D) copper, a rotated pattern (R), and plated holes. The convenient 2-hole ProtoBoard pattern provides an easy way to connect parts while maximizing usable board area. The 2-hole pattern is good for compact analog and digital circuit layouts since many discrete components can be located closely and is often more convenient than pad-per-hole patterns. Plated holes provide a stronger solder joint than with single-sided boards as the solder flows into the hole.

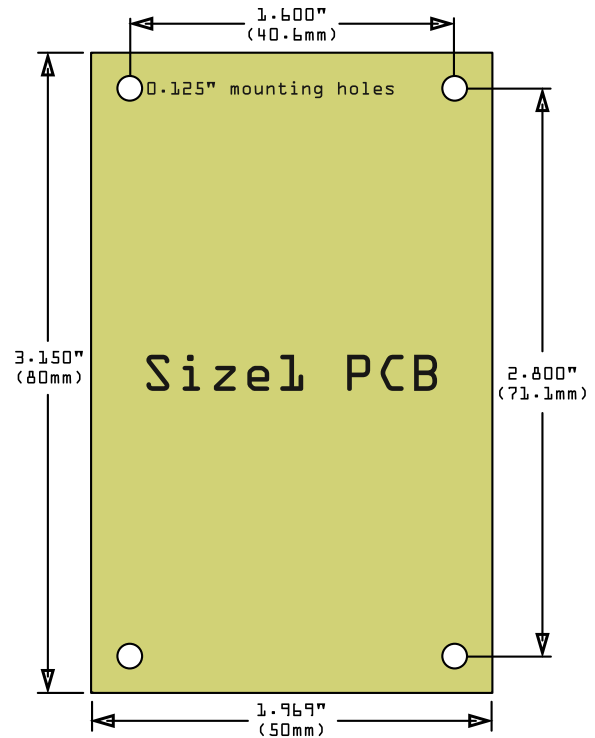
This double-sided board has 2-hole pads on the bottom side and individual pads on the top side allowing you to solder parts on either side as needed. Positioning pads are provided to help in locating holes, with the bottom having square and round pads that correspond to the pads on the top side. The pattern is rotated 90 degrees so the tracks are parallel with the short edge of the board. This allows connectors, LEDs, and switches to be located on the long edge.

PR2H1-DR uses a high-quality FR4 glass-epoxy base that has higher stability and lifespan than vintage stripboard materials. An anti-tarnish coating protects the copper for a long shelf-life and provides easy soldering. The four 0.125" mounting holes are unplated to avoid shorting adjacent tracks in case they need to be used. They are sized for 4-40 size screws and are positioned on the 0.1" design grid.

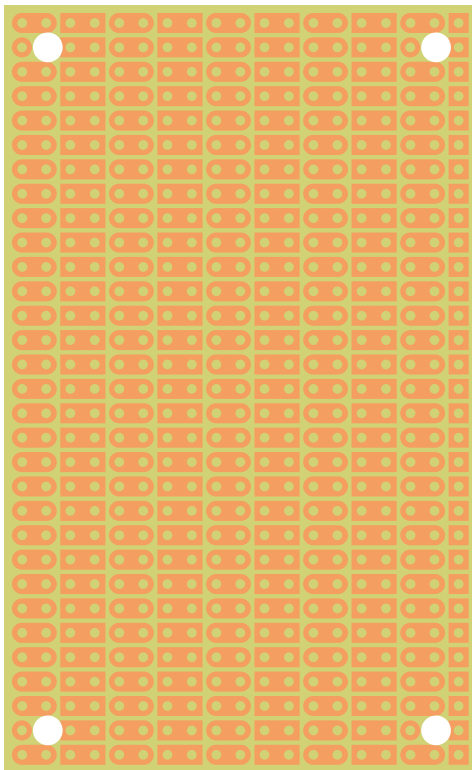
PR2H1-DR Specifications:

- Part #: PR2H1-DR
- Series: ProtoBoard 2H
- Plating: Plated Through Holes
- Pad Style: 2-Hole Pads
- No. of Pads: 310 Pads
- No. of Holes: 585 (31 cols x 19 rows)
- Pitch: 0.100" / 2.54mm
- Hole Diameter: 0.037" / 0.94mm
- Sides: Double-sided
- Substrate: FR4 Epoxy Glass
- Anti-tarnish Coating: Yes
- Metal: Copper (1oz/ft²)
- Silkscreen: None
- Length: 3.15" / 80mm
- Width: 1.97" / 50mm
- Thickness: 0.063" / 1.60mm
- Mounting Holes: 4 x 0.125" / 3.18mm
- RoHS: Yes

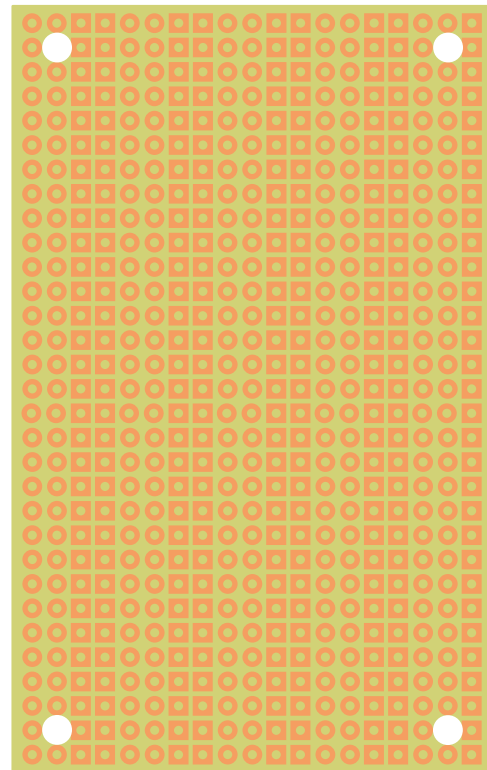
PR2H1-DR Measurements:



PR2H1-DR Drawings:



PR2H1-DR Bottom Side



PR2H1-DR Top Side